

13-Oct-2021

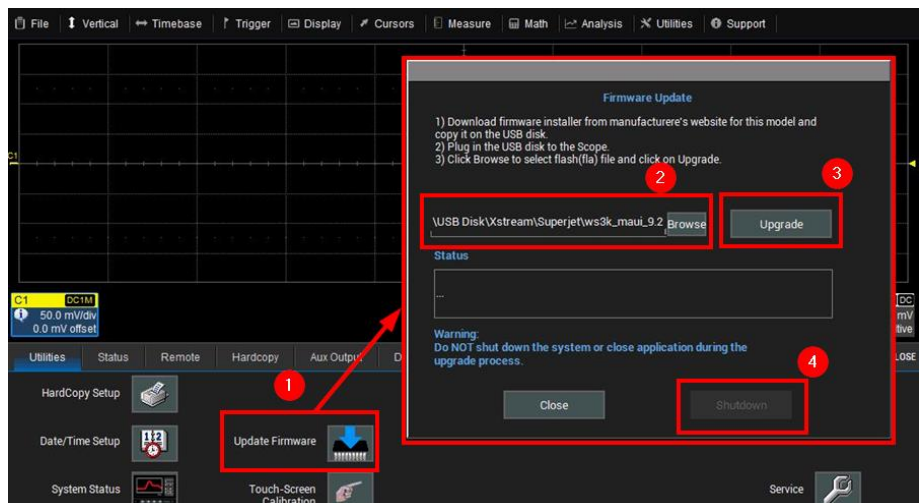
Summary

For the WaveSurfer 3000 oscilloscopes a BIOS update can be installed when the Firmware is at V9.1.0.3 or higher..

There were cases where WS3000 oscilloscopes ran into a boot loop and needed a system recovery to reenale normal operation. The BIOS update fixes this problem. This application brief describes how to install the BIOS updated, which is available if firmware version 9.1.0.3 or newer is installed. If the instrument currently is in the bool loop, you first need to make a system recovery. In this case please contact your local applications support.

BIOS Update

1. Download the latest MAUI Software from our website.
[WS3000 Firmware](#)
2. Copy or save the firmware *.fla file to a USB flash drive. The drive must be FAT16 formatted so that it can be used in the WS3000.
3. Boot the oscilloscope and plug in the USB flash drive with the downloaded firmware file.
4. Now select “Utilities - Utilities Setup” in the oscilloscope software and click the “**Update Firmware**” button (1).
 - If MAUI V9.1.0.3 or newer is already installed, you can skip the steps 5 and 6 and proceed with step 7.
5. In the popup window “**Browse**” (2) to the firmware installation file on the USB flash drive and start the Upgrade (3).
6. After the upgrade is finished, the “**Shutdown**” button (4) gets active and you can reboot the oscilloscope.



- Now enter again the Utilities Setup and click again on the **“Update Firmware”** (5) button. This will open a popup window for the BIOS update.
- Click on the **“Update BIOS”** button (6) which enables the **“Shutdown”** button (7).
- Shutdown and reboot the oscilloscope. The BIOS update will start automatically on reboot.
- Wait until the MAUI software is started and don't turn off the instrument during the BIOS update process.
- After the MAUI software has started, the BIOS update is finished and you can start working.

